



Cover and above: Soar

### **Caroline Best**

Caroline is curious to explore different techniques and materials, including clay, cement, wax, wood, stone and mixed media - casting in either cold or hot bronze and occasionally terracotta. Apart from commissions, Caroline prefers to progress in series, as can be seen in her series of Angels, some of which are included in this exhibition.

The style of her work varies according to subject and observation. It is essential to her that the sculptures convey energy and spirit, transferring inner senses to outer environment - sometimes with humour, but not sentiment.

### **Private View**

**Wine, Cheese and Biscuits**

**Thursday 3rd April 2008 6pm to 8pm**

### **The Ruthven Gallery**

136a High Street, Auchterarder, PH3 1AA

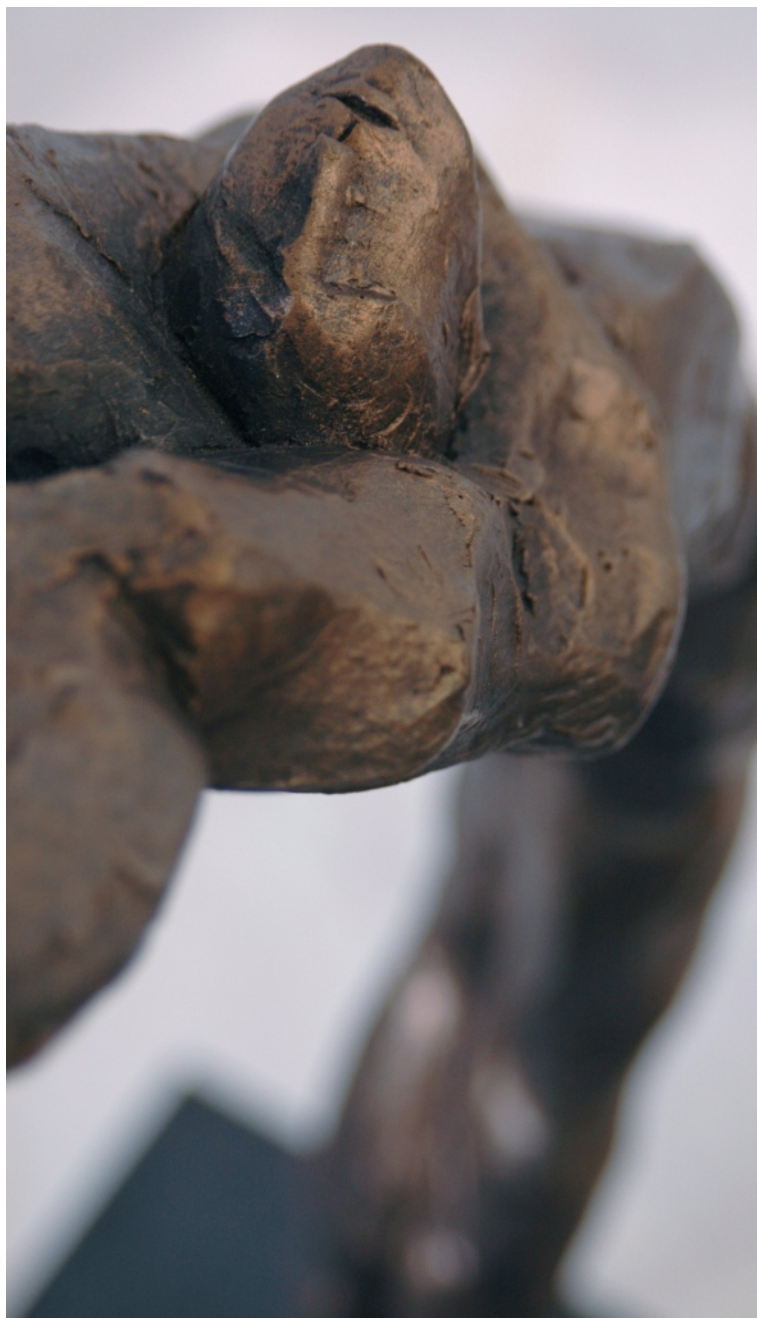
Mon-Sat 10am-5pm, Wed 10am-1pm, Thur 10am-6pm

Tel: 01764 664233

Email: [enquiries@theruthvengallery.co.uk](mailto:enquiries@theruthvengallery.co.uk)

[www.theruthvengallery.co.uk](http://www.theruthvengallery.co.uk)

**SPRING EXHIBITION  
4TH APRIL TO 3RD JUNE 2008  
THE RUTHVEN GALLERY**





Below: Spring Flowers and Chilli Peppers; Above: On Ancient Ways



### Iona Leishman

Rich, luscious colours and textures draw Iona to combined media that can include oil, pastel, charcoal, ink and collage all in one piece of work. Her paintings are both exciting and intricate - very eye-catching but also rewarding to close scrutiny.

Joan Eardley is a major influence on her work, as is contemporary Orcadian artist Peter McLaren.

### Margaret Evans

Margaret is continually inspired to produce colourful and striking new work from her experiences both at home and the places that her painting workshops take her to. Her travels have taken her throughout Europe, India, Australia and USA, producing reference material (sketchbooks and photographs) that covers an infinite wealth of subjects.



Below: Tullibardine Steading; Top: Buckhaven Blues; Above: Pennan Cottages

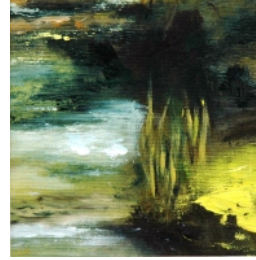


### Gillian Allan

Both during her working life and since retiring, Gillian has attended courses at Glasgow School of Art and has painted with several tutors abroad.

She has developed her work from traditional watercolour and oils to a more impressionist and abstract style. She derives much inspiration from landscape both in Scotland and abroad. Although she still prefers watercolour for painting flowers, most of her work is now in oils.

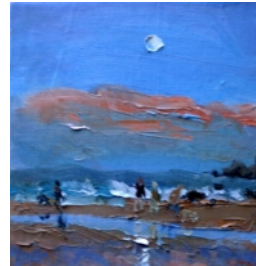
Top: Edge of the Pond; Above: Lily Pond



### Hugh Kirkwood

Steeped in the tradition of Scottish art and painting directly from life, Hugh's main subject matter is figurative. His work is inspired by the quality of light and movement, and is made all the more satisfying for him when people enter the landscape. He finds painting directly from life challenging but very rewarding and an emotional response to what surrounds him.

Like Fergusson and Peploe before him, he enjoys painting people on a beach.



Above right: Moon Rising, Cullen Beach

Right: Local Hero

