



Claudia Massie

Jonathan Shearer

We are approaching our fifth year of business and it is with delight that we are showing work by Claudia Massie and Jonathan Shearer, two artists who we very much admire.

It is over a year since Claudia and Jonathan have shown work with us, and it is exciting that this is their first exhibition together and also our first two-person show in the new exhibition space.

Please come along to meet and chat to the artists about their work on Saturday 7th May.



The artwork in this brochure represents a selection of work available at the exhibition.

# Claudia Massie

# Jonathan Shearer

7th May to 2nd July 2011

**Private View**

**Wine, Cheese and Biscuits**

**Saturday 7th May 2011 1pm to 3pm**

**The Ruthven Gallery**

90 High Street, Auchterarder, PH3 1BJ

Tue-Sat 10am-5pm

Tel: 01764 664233

Email: [enquiries@theruthvengallery.co.uk](mailto:enquiries@theruthvengallery.co.uk)

[www.theruthvengallery.co.uk](http://www.theruthvengallery.co.uk)

**The Ruthven Gallery**  
Contemporary Art and Framing

**Claudia Massie**

“Much of my recent work is concerned with one particular, rather narrow, geographic area which allows me to create specific boundaries in the work and really examine that landscape to a deep level. I am drawn to paint forestry plantations, and one in particular in Perthshire, called Murray’s Hill, which is set on a ridge overlooking Strathearn to the south and the Highland foothills to the north. This setting allows a great variety of compositional opportunity and, with the forestry, provides the chance to explore an endemic but little appreciated element of the Scottish landscape.”

Strathearn to West Lomond  
Oil on Board, 61 x 122cm





*left:* West Lomond  
Oil on Board, 41 x 20cm

*right:* Winter Forestry II  
Oil on Board, 62 x 89cm





*left:* Forestry Study I  
Oil on Board, 25 x 14cm

*middle:* Lone Tree  
Oil on Board, 25 x 14cm

*right:* Early Light II  
Oil on Board, 61 x 89cm

February  
Oil on Board, 61 x 122cm



**Jonathan Shearer**

“My paintings are concerned with trying to convey the sensation of being immersed in the landscape, the wind in your face, the soft bogginess of the moor beneath your feet, the clouds enveloping the mountain. The sheer exhilaration of wild places. In the landscape I work on small oil paintings on board. Back in the studio I use them to develop larger paintings. Working quickly on several paintings at a time allows the changing light, ebb and flow of the tide and the elusive mood of the landscape to set the pace.”

Storm Clouds, Uig  
Oil on Canvas, 50 x 100cm





*left:* Rannoch Moor  
Oil on Canvas, 60 x 75cm

*right:* River Coe, Glen Coe  
Oil on Canvas, 79 x 100cm



*left:* North East

Oil on Canvas, 50 x 100cm

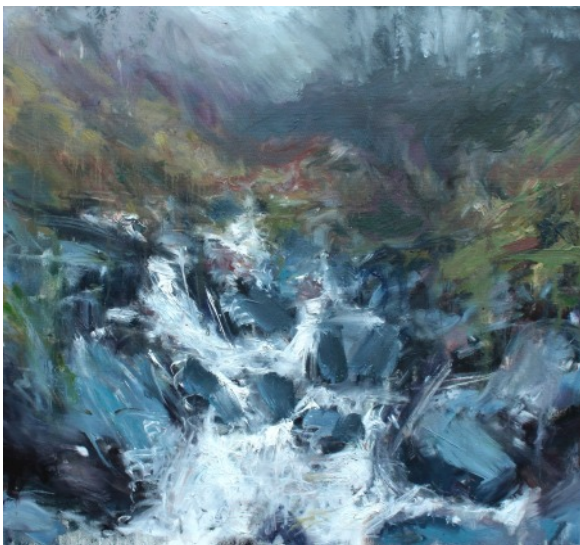
*right top:* Portmahomack Beach

Oil on Board, 18 x 24cm

*right bottom:* Inverhaggernie Burn II

Oil on Canvas, 50 x 47cm

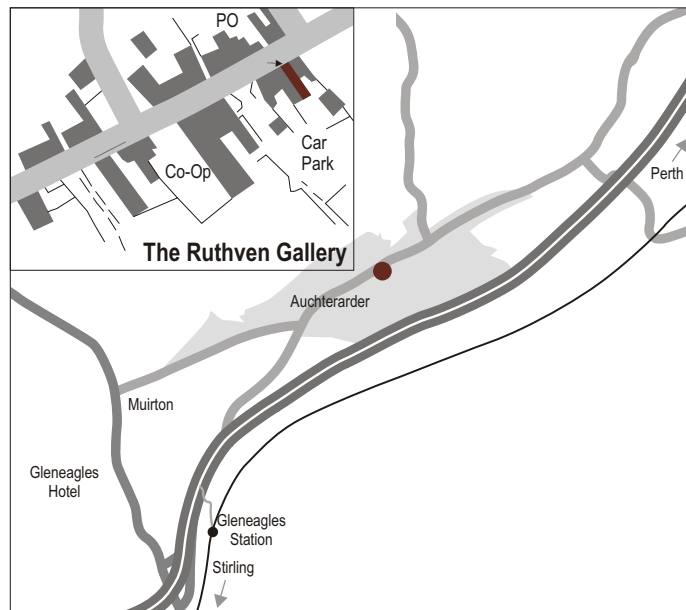




We are on the main street, just down from the car park and opposite the Ayton Hall.



Follow the gallery on Facebook and get the latest news, photos and exhibition details.





Brochure Design by The Ruthven Gallery